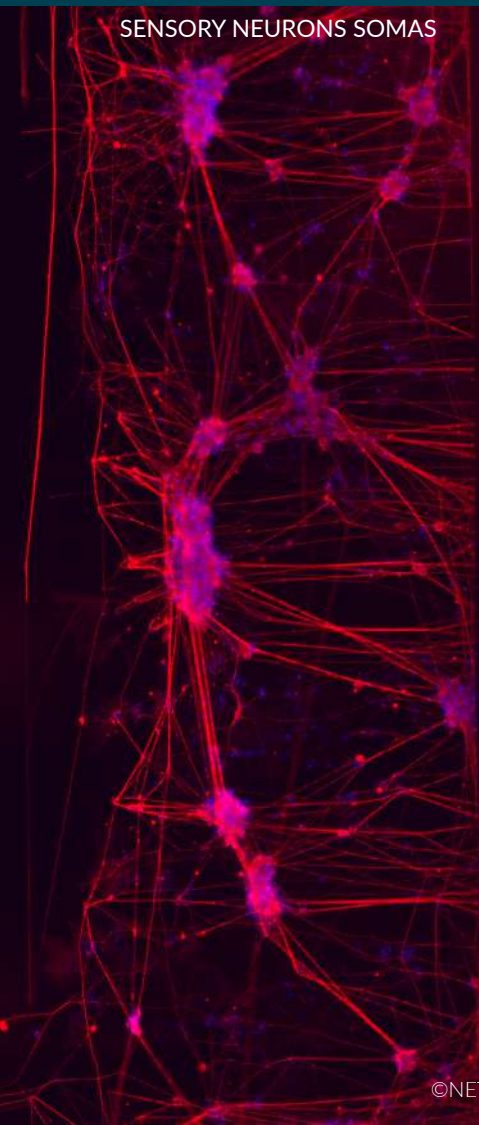


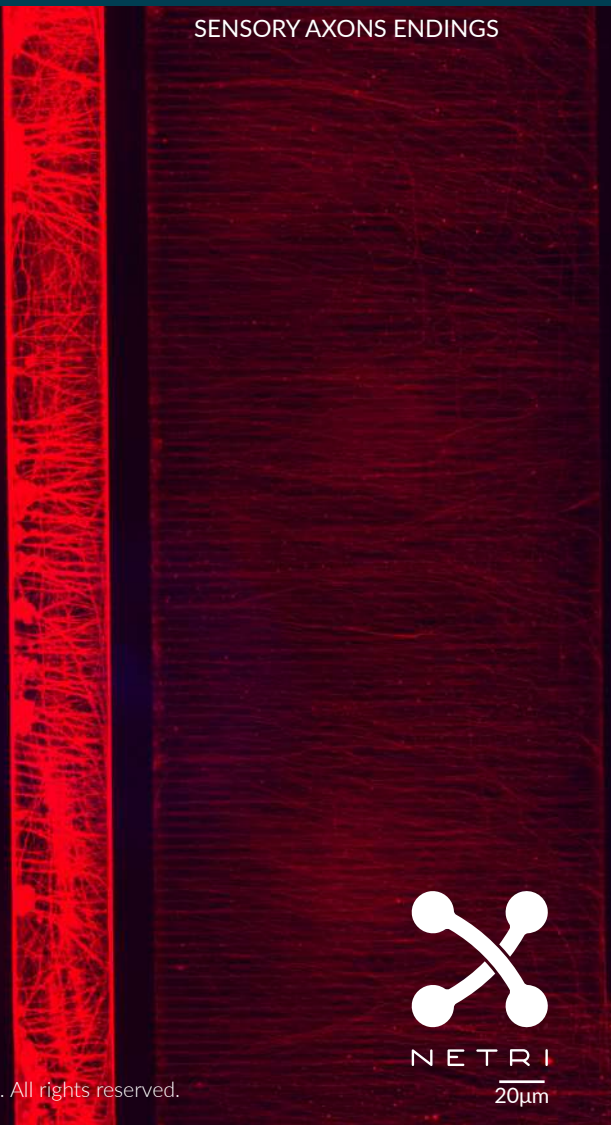
PAIN & INJURY

with  NETRI

SENSORY NEURONS SOMAS



SENSORY AXONS ENDINGS



NETRI

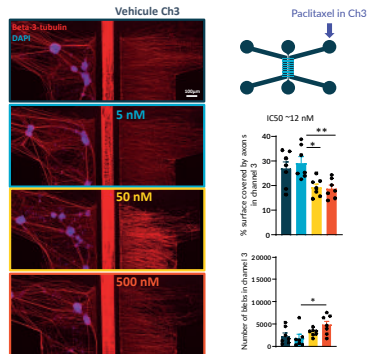
20µm

PAIN & INJURY

COMPARTMENTALIZED IN VITRO MODELS

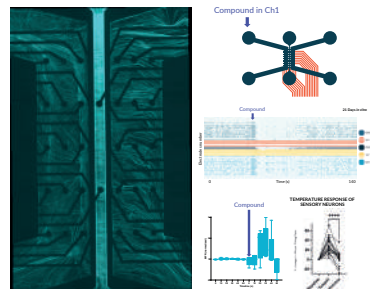
Chemotherapy Induced Peripheral Neuropathy (CIPN)

- Paclitaxel CIPN Model and Oxaliplatin CIPN Model
- Segregate therapeutic modality: topical versus systemic
- Discriminate mode of action and mechanism of neurotoxicity, thanks to compartmentalization and associated fluid isolation: soma versus neurites
- Platform compatible with High-Throughput Assays & Imaging



Sensory Neurons electrical activity

- Human sensory neurons as a bio-digital sensor
- Electrophysiology activity isolation per cell compartment
- Platform compatible with High-Throughput Assays and MicroElectrode Array (MEA)
- A powerful way to decode data from any innervated organs



Available data

Find our Cell Type Protocols, Data Sheet, Posters and Q&A at www.netri.com/resources

©NETRI. All rights reserved.

CONTACT



www.netri.com/resources

NETRI SAS - 321 Avenue Jean Jaures 69007 Lyon - FRANCE

Bat.A - 213 Rue de Gerland 69007 Lyon - FRANCE

Phone: +33 4 78 23 08 66 - Email: contact@netri.com